

1
2-4

The Old Brewery
Old Brewery Apartments

3 STOREY HOUSE

Ground floor

LIVING ROOM	4.51m	x	5.03m	14'9"	x	16'6"
DINING	2.56m	x	4.64m	8'5"	x	15'3"
KITCHEN	4.00m	x	3.26m	13'0"	x	10'8"

First floor

BEDROOM 1	4.45m	x	3.53m	14'7"	x	11'6"
BEDROOM 2	2.24m	x	4.00m	7'4"	x	13'0"
BATHROOM	2.27m	x	2.17m	7'5"	x	7'1"

Second floor

BEDROOM 3	4.42m	x	3.50m	14'6"	x	11'6"
INCLUDING LUCAM	4.42m	x	5.90m	14'6"	x	19'4"
EN-SUITE	2.07m	x	2.19m	6'9"	x	7'2"
BEDROOM 4 /STUDY	3.35m	x	3.99m	11'0"	x	13'1"

Total Internal	166 sqm	1787 sqft
----------------	---------	-----------

APARTMENT 2

LIVING /DINING	5.51m	x	4.48m	18'1"	x	14'8"
KITCHEN	3.51m	x	3.30m	11'6"	x	10'10"
BEDROOM	4.54m	x	4.25m	14'10"	x	13'11"
BATHROOM /EN-SUITE	2.79m	x	3.30m	9'2"	x	10'10"

Total Internal	82 sqm	883 sqft
----------------	--------	----------

APARTMENT 3

LIVING /DINING	6.37m	x	4.14m	20'10"	x	13'6"
KITCHEN	2.99m	x	2.84m	9'10"	x	9'4"
BEDROOM 1	5.15m	x	4.25m	16'11"	x	13'11"
EN-SUITE	1.95m	x	3.30m	6'5"	x	10'10"
BEDROOM 2	4.20m	x	3.85m	13'9"	x	12'8"
EN-SUITE	2.07m	x	2.22m	6'9"	x	7'3"

Total Internal	104 sqm	1120 sqft
----------------	---------	-----------

APARTMENT 4

LIVING /DINING	3.90m	x	5.27m	12'10"	x	17'3"
KITCHEN	2.82m	x	2.22m	9'3"	x	7'3"
BEDROOM 1	3.61m	x	3.84m	11'10"	x	12'7"
EN-SUITE	2.39m	x	1.76m	7'10"	x	5'9"
BEDROOM 2	3.40m	x	3.67m	11'2"	x	12'0"

Total Internal	72 sqm	775 sqft
----------------	--------	----------

SOUTH EAST ELEVATION
GROUND FLOOR



The plans and measurements shown are for general guidance only and are subject to change. Dimensions are based on the longest measurable distance in two directions across each space subject to the shape of the space. Areas are based on the measured perimeter of the space. All figures are based on drawn information. Although as accurate as possible at the time of publication they cannot be relied upon for complete accuracy and do not constitute a contract or warranty. March 2017.

The Old Brewery • 1
Old Brewery Apartments • 2-4

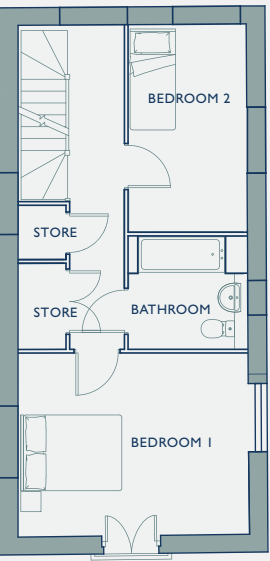
House: 166 sqm • 1787 sq ft

Apt 2: 82 sqm • 883 sq ft

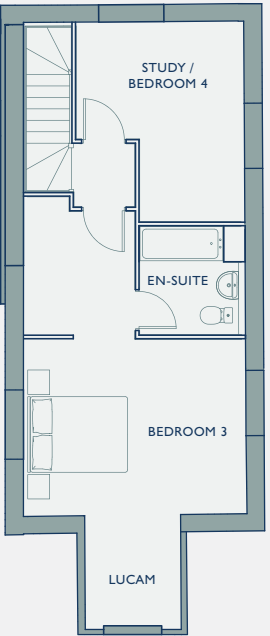
Apt 3: 104 sqm • 1120 sq ft

Apt 4: 72 sqm • 775 sq ft

1 First floor



1 Second floor



5-7

First floor
Old Brewery Apartments

APARTMENT 5

LIVING / DINING	5.51m	x	4.48m	18'0"	x	14'8"
KITCHEN	3.51m	x	3.30m	11'6"	x	10'10"
BEDROOM	4.54m	x	4.25m	14'11"	x	13'11"
EN-SUITE	2.79m	x	3.30m	9'2"	x	10'10"
Total Internal	82 sqm			883 sqft		

APARTMENT 6

LIVING / DINING	6.37m	x	4.14m	20'10"	x	13'6"
KITCHEN	2.99m	x	2.84m	9'10"	x	9'4"
BEDROOM 1	5.15m	x	4.25m	16'11"	x	13'11"
EN-SUITE	1.95m	x	3.30m	6'5"	x	10'10"
BEDROOM 2	4.22m	x	3.85m	13'10"	x	12'8"
EN-SUITE	2.04m	x	2.22m	6'8"	x	7'3"
BALCONY	?.??m	x	?.??m	?'?"	x	?'?"
Total Internal	104 sqm			1120 sqft		

APARTMENT 7

LIVING / DINING	3.90m	x	5.27m	12'10"	x	17'3"
KITCHEN	2.82m	x	2.22m	9'3"	x	7'3"
BEDROOM 1	3.61m	x	3.84m	11'10"	x	12'7"
EN-SUITE	2.39m	x	1.76m	7'10"	x	5'9"
BEDROOM 2	3.40m	x	3.67m	11'2"	x	12'0"
Total Internal	72 sqm			775 sqft		

SOUTH EAST ELEVATION
FIRST FLOOR



First floor • Apartments 5-7

Apt 5: 82 sqm • 883 sq ft
Apt 6: 104 sqm • 1120 sq ft
Apt 7: 72 sqm • 775 sq ft



The plans and measurements shown are for general guidance only and are subject to change. Dimensions are based on the longest measurable distance in two directions across each space subject to the shape of the space. Areas are based on the measured perimeter of the space. All figures are based on drawn information. Although as accurate as possible at the time of publication they cannot be relied upon for complete accuracy and do not constitute a contract or warranty. March 2017.