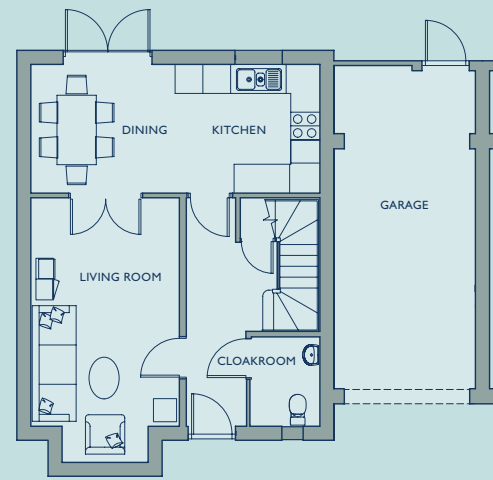


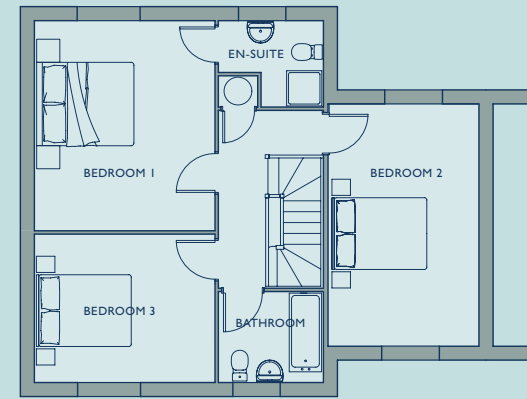
The Bardfield · Plot 14

3 Bedrooms · 115 sqm · 1238 sq ft

GROUND FLOOR



FIRST FLOOR



GROUND FLOOR

LIVING ROOM	3.18m	x	4.88m	10'5"	x	16'0"
INC. BAY WINDOW	3.18m	x	5.66m	10'5"	x	18'6"
KITCHEN / DINING	6.19m	x	2.73m	20'3"	x	8'11"

FIRST FLOOR

BEDROOM 1	3.86m	x	4.50m	12'7"	x	14'9"
EN-SUITE	2.23m	x	1.83m	7'3"	x	6'0"
BEDROOM 2	3.21m	x	5.19m	10'6"	x	17'0"
BEDROOM 3	3.86m	x	3.17m	12'7"	x	10'4"
BATHROOM	2.22m	x	1.91m	7'3"	x	6'3"

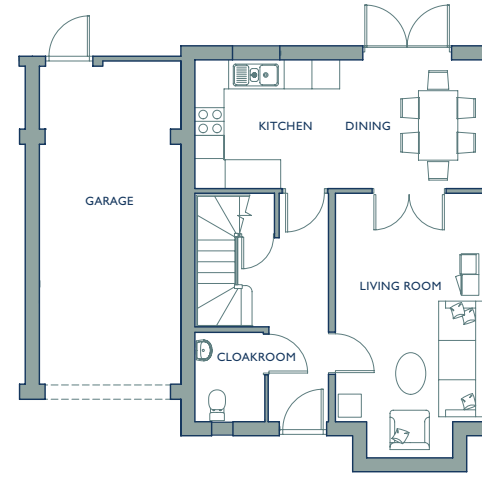
Total Internal 115 sqm 1238 sq ft

The plans and measurements shown are for general guidance only and are subject to change. Dimensions are based on the longest measurable distance in two directions across each space subject to the shape of the space. Areas are based on the measured perimeter of the space. All figures are based on drawn information. Although as accurate as possible at the time of publication they cannot be relied upon for complete accuracy and do not constitute a contract or warranty. March 2017.

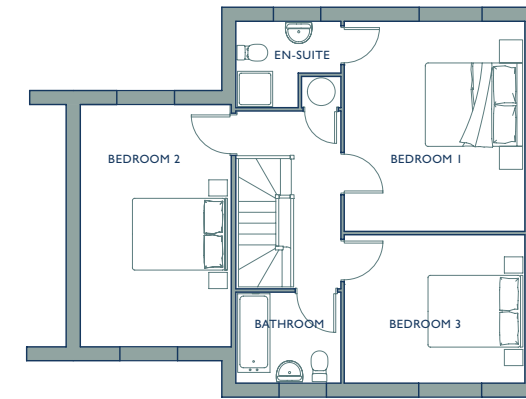
The Bardfield · Plot 9

3 Bedrooms · 115 sqm · 1238 sq ft

GROUND FLOOR



FIRST FLOOR



GROUND FLOOR

LIVING ROOM	3.18m	x	4.88m	10'5"	x	16'0"
INC. BAY WINDOW	3.18m	x	5.66m	10'5"	x	18'6"
KITCHEN / DINING	6.19m	x	2.73m	20'3"	x	8'11"

FIRST FLOOR

BEDROOM 1	3.86m	x	4.50m	12'7"	x	14'9"
EN-SUITE	2.23m	x	1.83m	7'3"	x	6'0"
BEDROOM 2	3.21m	x	5.19m	10'6"	x	17'0"
BEDROOM 3	3.86m	x	3.17m	12'7"	x	10'4"
BATHROOM	2.22m	x	1.91m	7'3"	x	6'3"

Total Internal 115 sqm 1238 sq ft

The plans and measurements shown are for general guidance only and are subject to change. Dimensions are based on the longest measurable distance in two directions across each space subject to the shape of the space. Areas are based on the measured perimeter of the space. All figures are based on drawn information. Although as accurate as possible at the time of publication they cannot be relied upon for complete accuracy and do not constitute a contract or warranty. March 2017.