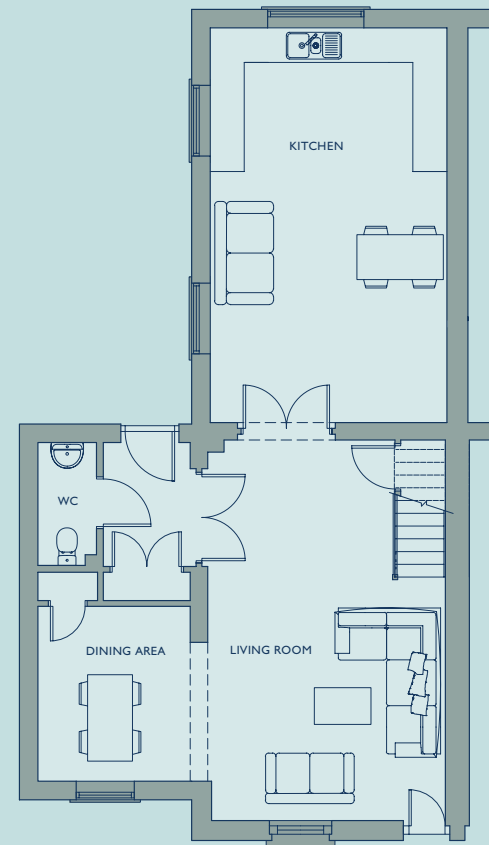


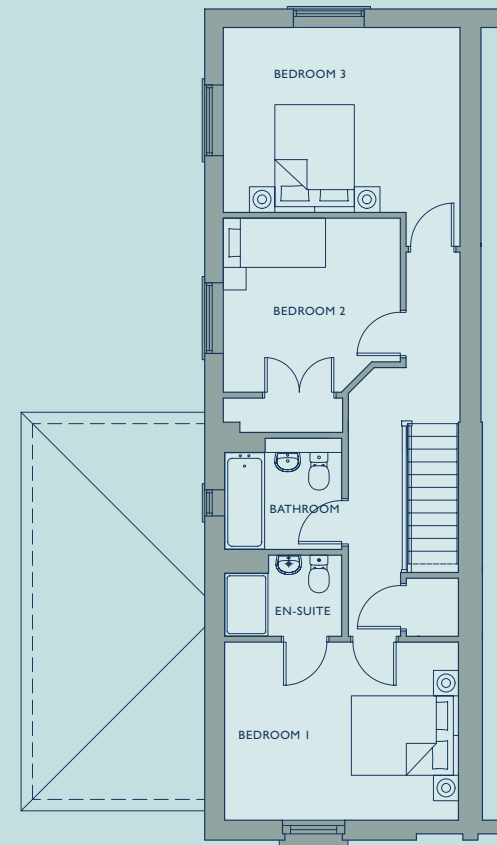
The Brewer's Cottages • Plot 23

3 Bedrooms • 134 sqm • 1442 sqft

GROUND FLOOR



FIRST FLOOR



GROUND FLOOR

KITCHEN	4.17m	x	6.96m	13'8"	x	22'10"
LIVING ROOM	4.19m	x	6.71m	13'9"	x	22'0"
DINING AREA	2.69m	x	3.08m	8'10"	x	10'1"

FIRST FLOOR

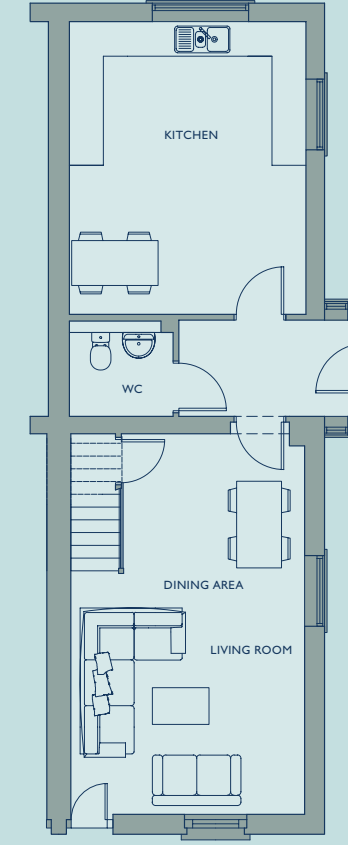
BEDROOM 1	4.12m	x	3.14m	13'6"	x	10'4"
EN-SUITE	2.06m	x	1.43m	6'9"	x	4'8"
BEDROOM 2	3.12m	x	3.07m	10'3"	x	10'1"
BEDROOM 3	4.17m	x	3.26m	13'8"	x	10'8"
BATHROOM	2.06m	x	1.96m	6'9"	x	6'5"

Total Internal 134 sqm 1442 sqft

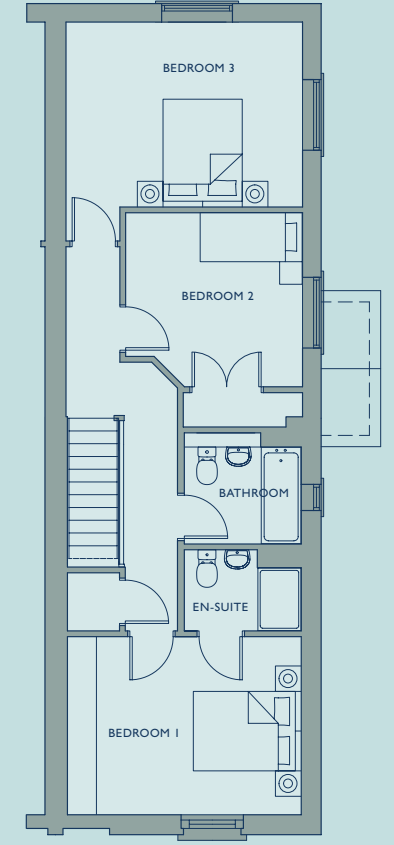
The Brewer's Cottages • Plot 24

3 Bedrooms • 117 sqm • 1259 sqft

GROUND FLOOR



FIRST FLOOR



GROUND FLOOR

KITCHEN	4.17m	x	5.16m	13'8"	x	16'11"
LIVING ROOM	4.12m	x	6.71m	13'6"	x	22'0"

FIRST FLOOR

BEDROOM 1	4.12m	x	3.14m	13'6"	x	10'4"
EN-SUITE	2.06m	x	1.43m	6'9"	x	4'8"
BEDROOM 2	3.12m	x	3.07m	10'3"	x	10'1"
BEDROOM 3	4.17m	x	3.26m	13'8"	x	10'8"
BATHROOM	2.06m	x	1.96m	6'9"	x	6'5"

Total Internal 117 sqm 1259 sqft