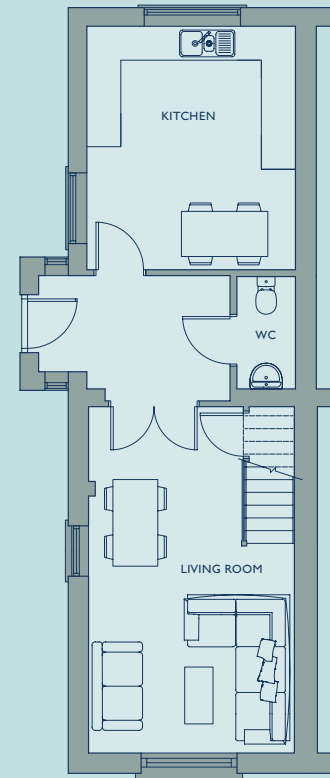


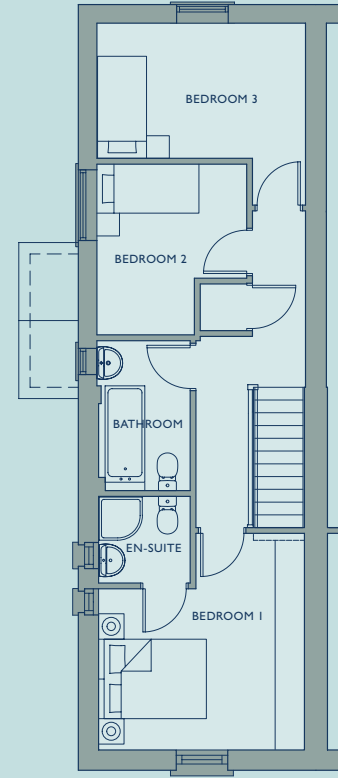
The Brewer's Cottages • Plot 25

3 Bedrooms • 95 sqm • 1023 sq ft

GROUND FLOOR



FIRST FLOOR



GROUND FLOOR

KITCHEN/DINING	3.68m	x	4.30m	12'1"	x	14'1"
LIVING ROOM	3.63m	x	6.11m	11'11"	x	20'1"

FIRST FLOOR

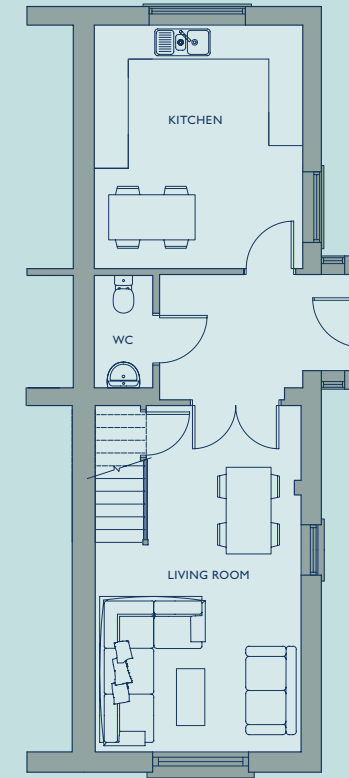
BEDROOM 1	3.63m	x	3.82m	11'11"	x	12'6"
EN-SUITE	1.61m	x	1.53m	5'3"	x	5'0"
BEDROOM 2	2.64m	x	3.01m	8'8"	x	9'10"
BEDROOM 3	3.68m	x	2.38m	12'1"	x	7'10"
BATHROOM	1.61m	x	2.64m	5'3"	x	8'8"

Total Internal 95 sqm 1023 sq ft

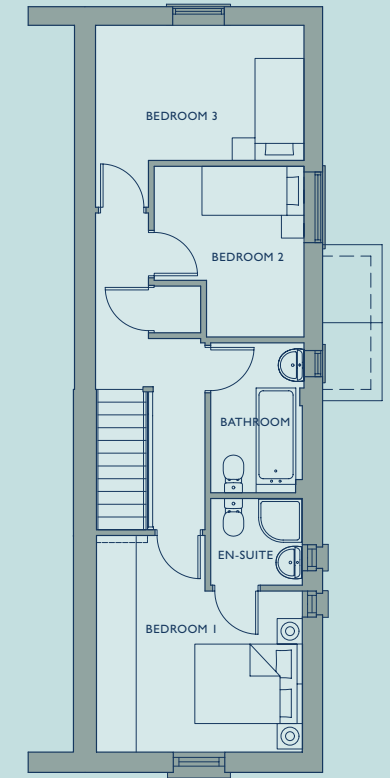
The Brewer's Cottages • Plot 26

3 Bedrooms • 95 sqm • 1023 sq ft

GROUND FLOOR



FIRST FLOOR



GROUND FLOOR

KITCHEN/DINING	3.68m	x	4.30m	12'1"	x	14'1"
LIVING ROOM	3.63m	x	6.11m	11'11"	x	20'1"

FIRST FLOOR

BEDROOM 1	3.63m	x	3.82m	11'11"	x	12'6"
EN-SUITE	1.61m	x	1.53m	5'3"	x	5'0"
BEDROOM 2	2.64m	x	3.01m	8'8"	x	9'10"
BEDROOM 3	3.68m	x	2.38m	12'1"	x	7'10"
BATHROOM	1.61m	x	2.64m	5'3"	x	8'8"

Total Internal 95 sqm 1023 sq ft