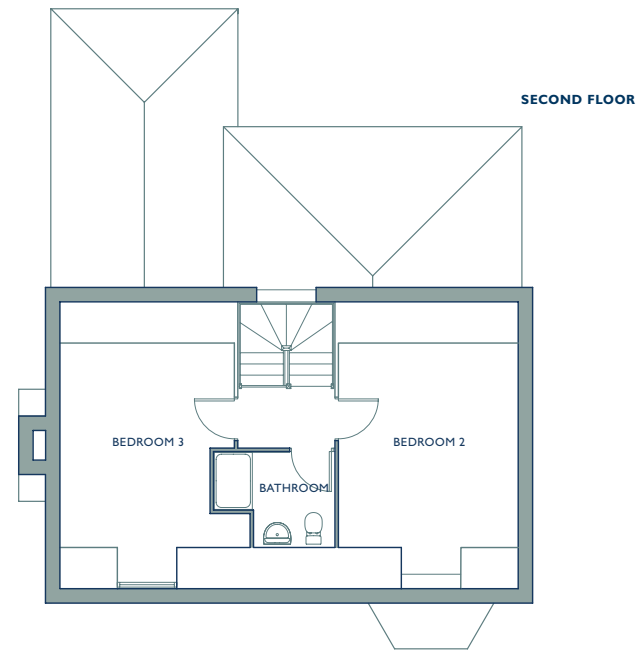
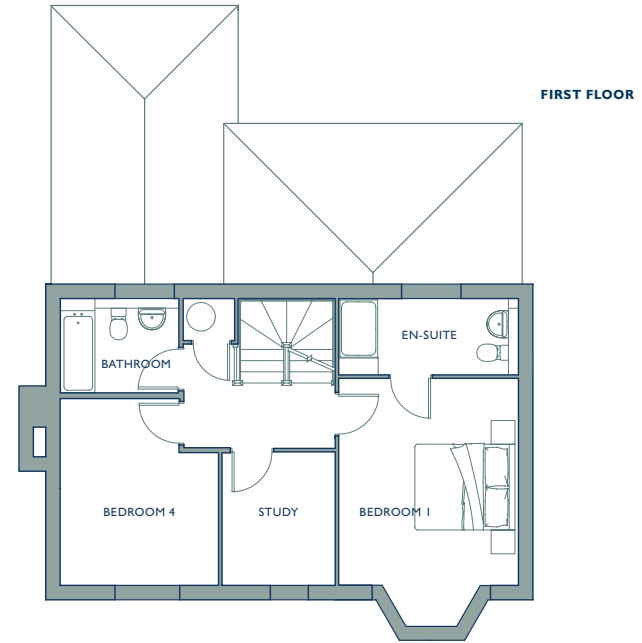
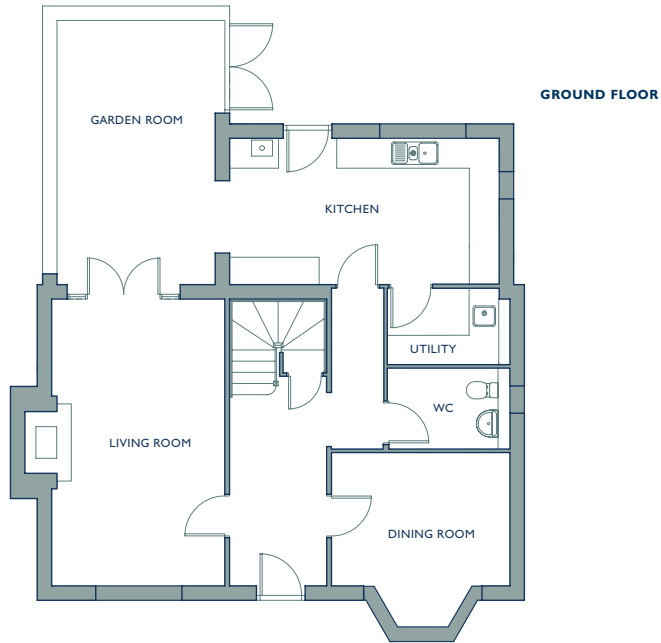


# The Leighs · Plots 20, 21 & 22

4/5 Bedrooms · 199 sqm · 2142 sq ft



**GROUND FLOOR**

LIVING ROOM	3.59m x 5.97m	11'9" x 19'7"
KITCHEN	5.61m x 2.26m	18'5" x 7'5"
DINING ROOM	3.70m x 2.67m	12'2" x 9'1"
INC. BAY WINDOW	3.70m x 3.65m	12'2" x 12'0"
UTILITY	2.31m x 2.35m	7'7" x 7'9"
GARDEN ROOM	3.27m x 5.50m	10'9" x 18'1"

**FIRST FLOOR**

BEDROOM 1	3.74m x 4.31m	12'3" x 14'2"
INC. BAY WINDOW	3.74m x 5.20m	12'3" x 17'1"
EN-SUITE	3.74m x 1.56m	12'3" x 5'1"
STUDY	2.35m x 2.77m	7'9" x 9'1"
BEDROOM 4	3.29m x 3.90m	10'10" x 12'10"
BATHROOM	2.45m x 1.95m	8'0" x 6'5"

**SECOND FLOOR**

BEDROOM 2	3.74m x 4.15m	12'3" x 13'7"
BEDROOM 3	3.62m x 4.15m	11'11" x 13'7"
BATHROOM	2.52m x 1.93m	8'3" x 6'4"

<b>Total Internal</b>	<b>199 sqm</b>	<b>2142 sqft</b>
-----------------------	----------------	------------------

The plans and measurements shown are for general guidance only and are subject to change. Dimensions are based on the longest measurable distance in two directions across each space subject to the shape of the space. Areas are based on the measured perimeter of the space. All figures are based on drawn information. Although as accurate as possible at the time of publication they cannot be relied upon for complete accuracy and do not constitute a contract or warranty. March 2017.