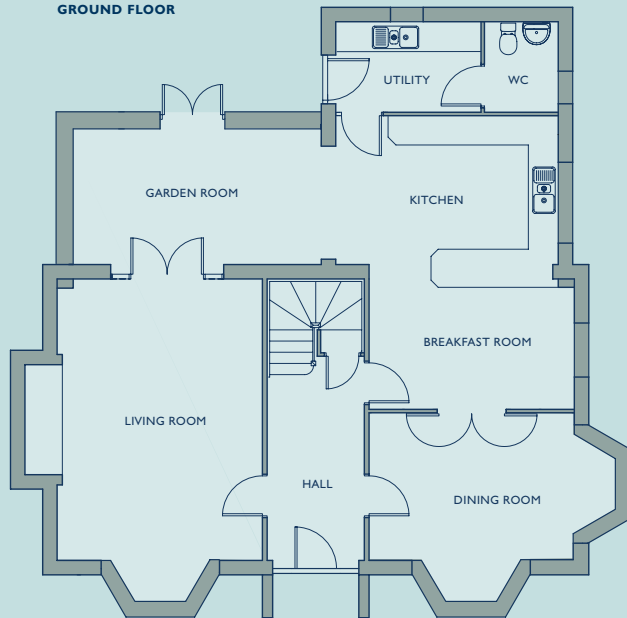


The Roding • Plots 11, 13 & 19

5/6 Bedrooms • 247 sqm • 2659 sq ft

GROUND FLOOR



GROUND FLOOR

LIVING ROOM	4.26m x 5.86m	13'11" x 19'2"
INC. BAY WINDOWS	4.26m x 6.75m	13'11" x 22'1"
DINING ROOM	4.26m x 3.05m	13'11" x 10'0"
INC. BAY WINDOWS	5.15m x 3.94m	16'10" x 12'11"
KITCHEN / BREAKFAST	4.62m x 6.10m	15'1" x 20'0"
GARDEN ROOM	5.18m x 2.82m	16'11" x 9'3"
UTILITY	2.99m x 1.86m	9'9" x 6'1"

FIRST FLOOR

BEDROOM 1	4.62m x 5.04m	15'1" x 16'6"
EN-SUITE	3.06m x 2.90m	10'0" x 9'6"
BEDROOM 2	3.76m x 3.84m	12'4" x 12'7"
BEDROOM 3	4.21m x 2.87m	13'9" x 9'4"
STUDY	2.64m x 2.31m	8'7" x 7'6"
BATHROOM	3.07m x 1.90m	10'0" x 6'2"

SECOND FLOOR

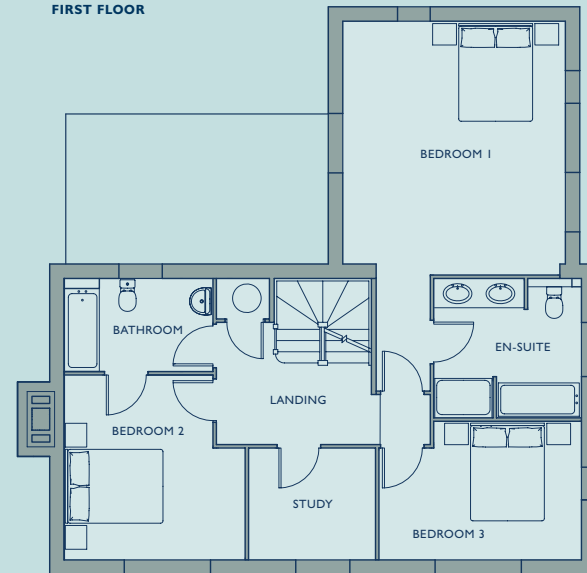
BEDROOM 4	4.30m x 2.94m	14'1" x 9'7"
EN-SUITE	2.93m x 1.11m	9'7" x 3'7"
DRESSING ROOM	2.01m x 1.77m	6'7" x 5'9"
BEDROOM 5	4.30m x 2.94m	14'1" x 9'7"
EN-SUITE	2.93m x 1.11m	9'7" x 3'7"

Total Internal

247 sqm

2659 sqft

FIRST FLOOR



SECOND FLOOR

