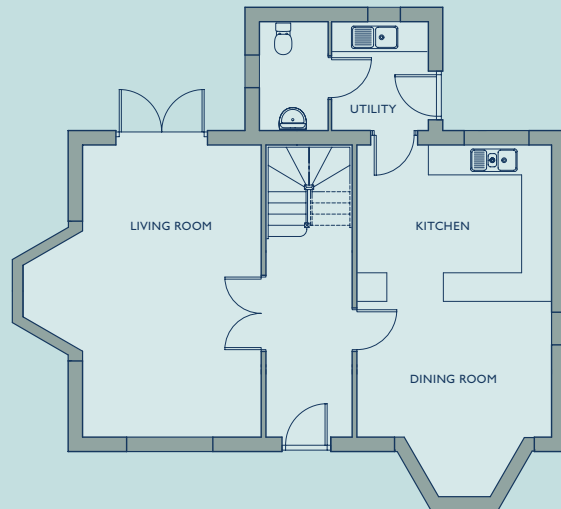


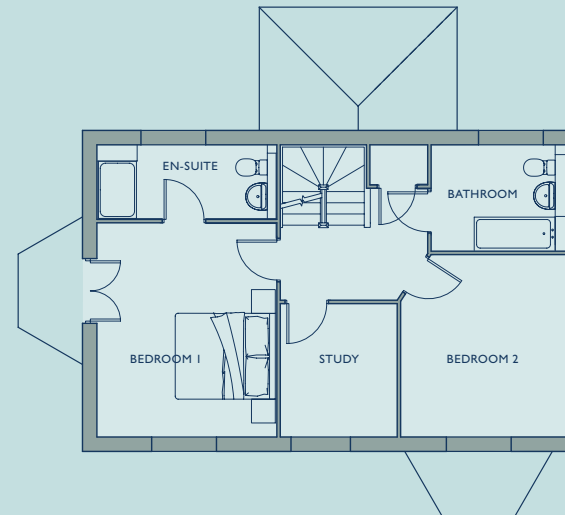
The Shalford • Plot 17

4/5 Bedrooms • 178 sqm • 1916 sq ft

GROUND FLOOR



FIRST FLOOR



GROUND FLOOR

LIVING ROOM	3.65m	x	6.06m	12'0"	x	19'10"
INC. BAY WINDOW	4.93m	x	6.06m	16'2"	x	19'10"
KITCHEN	3.98m	x	3.26m	13'1"	x	10'8"
DINING ROOM	3.98m	x	2.83m	13'1"	x	9'3"
INC. BAY WINDOW	3.98m	x	4.10m	13'1"	x	13'5"
UTILITY	1.99m	x	2.23m	6'6"	x	7'3"

FIRST FLOOR

BEDROOM 1	3.69m	x	4.46m	12'1"	x	14'7"
EN-SUITE	3.69m	x	1.53m	12'1"	x	5'0"
BEDROOM 2	3.43m	x	3.79m	11'3"	x	12'5"
BATHROOM	2.79m	x	2.19m	9'1"	x	7'2"
STUDY	2.48m	x	2.76m	8'2"	x	9'0"

SECOND FLOOR

BEDROOM 3	3.69m	x	4.38m	12'1"	x	14'4"
BEDROOM 4	2.20m	x	2.06m	7'3"	x	6'9"
BATHROOM	3.71m	x	4.38m	12'2"	x	14'4"

Total Internal

178 sqm

1916 sqft

SECOND FLOOR

