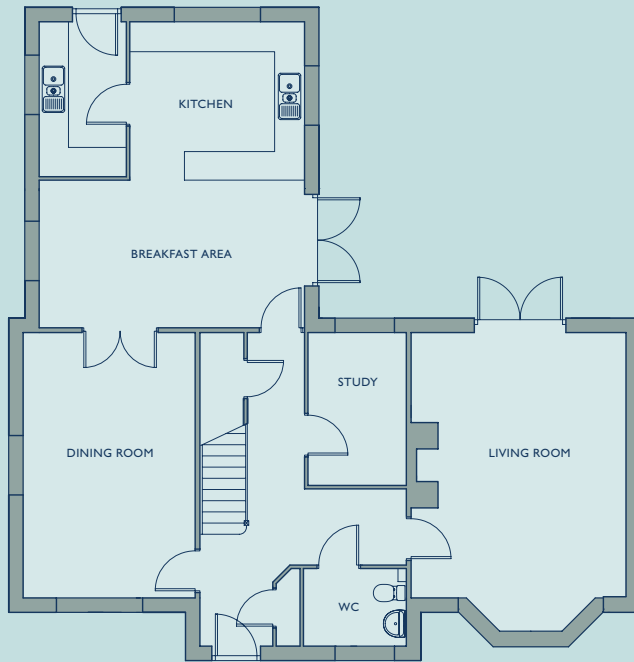


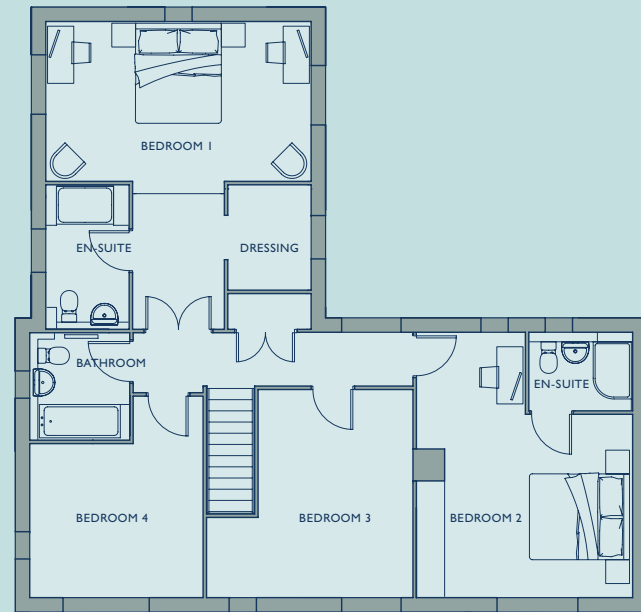
# The Waltham • Plot 12

4 Bedrooms • 217 sqm • 2336 sq ft

GROUND FLOOR



FIRST FLOOR



**GROUND FLOOR**

LIVING ROOM	4.46m	x	5.52m	14'7"	x	18'1"
INC. BAY WINDOW	4.46m	x	6.25m	14'7"	x	20'6"
STUDY	2.03m	x	3.17m	6'7"	x	10'4"
DINING ROOM	3.56m	x	5.52m	11'8"	x	18'1"
KITCHEN	3.63m	x	3.31m	11'10"	x	10'10"
BREAKFAST AREA	5.52m	x	3.06m	18'1"	x	10'0"
UTILITY	1.79m	x	3.21m	5'10"	x	10'6"

**FIRST FLOOR**

BEDROOM 1	5.52m	x	3.32m	18'1"	x	10'10"
EN-SUITE	1.71m	x	2.99m	5'7"	x	9'9"
DRESSING ROOM	1.71m	x	2.18m	5'7"	x	7'2"
BEDROOM 2	4.55m	x	5.52m	14'11"	x	18'1"
EN-SUITE	2.14m	x	1.61m	7'0"	x	5'3"
BEDROOM 3	4.30m	x	4.33m	14'1"	x	14'2"
BEDROOM 4	3.60m	x	4.19m	11'9"	x	13'8"
BATHROOM	2.04m	x	2.19m	6'8"	x	7'2"

Total Internal

217 sqm

2336 sqft

The plans and measurements shown are for general guidance only and are subject to change. Dimensions are based on the longest measurable distance in two directions across each space subject to the shape of the space. Areas are based on the measured perimeter of the space. All figures are based on drawn information. Although as accurate as possible at the time of publication they cannot be relied upon for complete accuracy and do not constitute a contract or warranty. March 2017.